

ACCELER8

A platform to build and integrate custom solutions

BACKGROUND

Prospecta Software Australia was established in 2002 in Sydney with focus on building innovative solutions. Since its inception, Prospecta has developed many products and those have been adopted by many large and mid size customers across the globe.

With innovation as its core driver, Prospecta has been a key player in niche areas in the ERP space and SAP has been their main strength.

Organizations today are facing a tough challenge to justify IT initiatives and to also justify their spending in major licenses for solutions from large vendors.

Prospecta with its strong product portfolio has yet again proved its leadership by introducing a unique platform **Acceler8** which is powerful and cost effective.

We understand that no ERP or software can meet the end to end business requirements and perhaps it has been the challenge that most of CIO faces today.

Keeping the custom application development and its integration with SAP as the core focus around the business, Prospecta's platform Acceler8 fits in.

TYPICAL PAIN POINTS

- High Cost of maintaining custom applications
- Dependent on selected technical resources.
- Lack of Integration to ERP systems.
- License cost of databases and operating systems is not justified for small applications.
- User Licenses for applications where users use only a part of the system but have to pay still huge license and

maintenance fees.

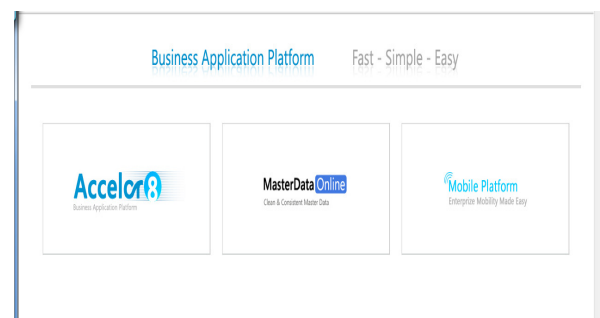
The above pain points are same both for an established and growing companies and therefore there is a need of a standard platform where the customer can build their small apps without worrying about specific vendor, license and development environment that they need to choose.

ACCELER8 OVERVIEW

Based on the open Architecture of J2EE, Acceler8 is built on the principles of Service Oriented Architecture (SOA).

The Key features of the platform are:

- Single Platform for easy development and deployment of custom applications
- Based on Service Oriented Architecture
- Strong Reporting Capability
- Powerful Workflow Engine that allows you to configure flat, circular or hierarchy based workflow with Escalations
- Works on strong Integration Principals
- Helps to bring multiple third party applications to run on a common platform
- Secured and Flexible
- Easy User Interface with use of AJAX where applicable.



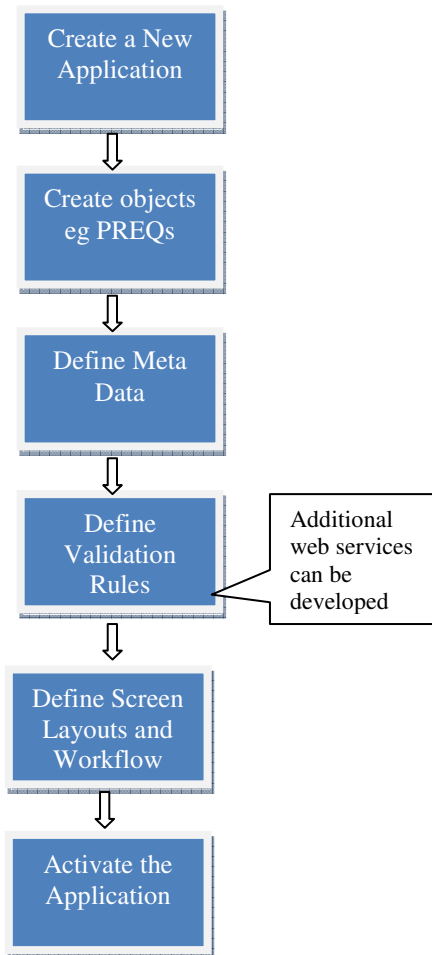
ACCELER8

A platform to build and integrate custom solutions

<p>Workflow Engine The Workflow Engine allows users to define their own business processes based on the various actions performed by the users. Users can define the hierarchy and the Workflow Templates using the feature. The Workflow engine also integrates to various mail servers.</p>	<p>Meta Data All Modules and Business areas are linked to their MetaData. The MetaData definition helps users define all the business and technical rules for each field in the object.</p>
<p>Jobs Job Management is where all scheduling of jobs are done. We can create our own web services on which based jobs can be scheduled.</p>	<p>System Admin This is where all the System related configurations are done. The System Landscapes defined here based on the various systems that needs to be linked. All Logs related to the system also can be viewed from here.</p>
<p>Integration This is the integration layer of the MCO where all integration related settings are done. Mapping of Fields and logs and representing of integration jobs are managed here.</p>	<p>User This is where all users are created based on which roles and permissions are managed. Users are managed centrally on the platform and are assigned applications based on their role.</p>

Control Panel of the platform

Below is a process of creating an application in Acceler8



Thursday, December 24, 2009

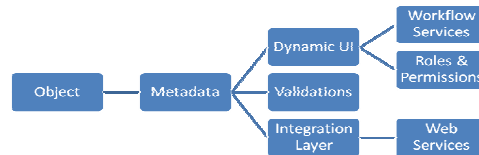
MetaData Configuration

MetaData Configuration Hierarchy Configuration

Structure PlantData

Action	Fieldname	Mandatory	FieldLength	Dependency	Structure	TableType	PickList
Modify/Delete	IBC_ID	No	1	No	PlantData	No	PickList
Modify/Delete	ALT_BOM_ID	No	1	No	PlantData	No	PickList
Modify/Delete	ALTERNATIVE_BOM	No	2	No	PlantData	No	No
Modify/Delete	ASSY_SCRAP	No	5	No	PlantData	No	No
Modify/Delete	AUTO_P_ORD	No	1	No	PlantData	No	No
Modify/Delete	AUTO_RESET	No	1	No	PlantData	No	No
Modify/Delete	AVAL_CHECK_ALL_PROD_SEGMENTS	No	1	No	PlantData	No	No
Modify/Delete	AVALCHECK	No	2	No	PlantData	No	PickList
Modify/Delete	BACKFLUSH	No	1	No	PlantData	No	PickList
Modify/Delete	BASE_QTY	No	13	No	PlantData	No	No

Meta Data for Material Creation



An Object Model in Acceler8

SYSTEM REQUIREMENTS

The objective of this platform is to keep the cost to a minimum.

Below is the minimum requirement to implement Acceler8.

Attributes	Specifications
Memory	4GB each
Hard Disk	100 GB each
Operating System	Linux , Windows, Unix
CPU	1
Database	SQL Server , My SQL
J2EE Server	JBOSS (Free)

ACCELER8

A platform to build and integrate custom solutions

KEY BENEFITS

- A quick and easy platform to deploy applications
- Save cost on expensive licenses of ERP's and expensive platforms.
- Can use your existing IT team to develop code as the platform is built on SOA.
- All custom applications would have the same look and feel and can also integrate within and outside the application.
- One Vendor to support all your custom applications.
- Zero coding for simple applications with inbuilt workflow.
- Can be implemented in few weeks.

OUR APPROACH

- Gather initial requirement for an application. This does not include any cost.
- Finalize a scope and submit a proposal.
- Configure and deploy the initial scope.
- Develop additional validations.
- Unit Test.
- UAT and System Test.
- Go Live.

OUR VALUE PROPOSITION

Our Value Proposition is that we bring in industry experience and best practices in solution development through previous implementations and improvements across various industries.

Engaging Prospecta to gather the requirement is the first step and also an exercise can be carried out to eliminate paper based process in your organization.

SUMMARY

The solution supports organizations in efficiently managing their applications in a consistent landscape and keeps the cost to a minimum.

For further information please see us at <http://www.prospectasoftware.com>